

# Reducing waste, emissions and water use with IFCO RPCs



Less waste out, fewer natural resources in:  
how switching to IFCO RPCs reduces your supply  
chain's impact on the environment.

**Producing less CO<sub>2</sub> while saving energy**

Using IFCO reusable plastic containers (RPCs) instead of single-use packaging means a significant reduction in CO<sub>2</sub>. That's because IFCO RPCs are designed to be reused again and again. No need to recycle and remanufacture them after every use like single-use packaging.

**Sending less waste to landfill**

IFCO RPCs reduce the creation of solid waste by 86%, thanks to their

long lifespan and the fact they are fully recyclable. Each is used between 30 – 120 times before it is removed from service due to wear, damage, or design changes. And at the end of its life, each is granulated and used to create new RPCs.

**Using less water**

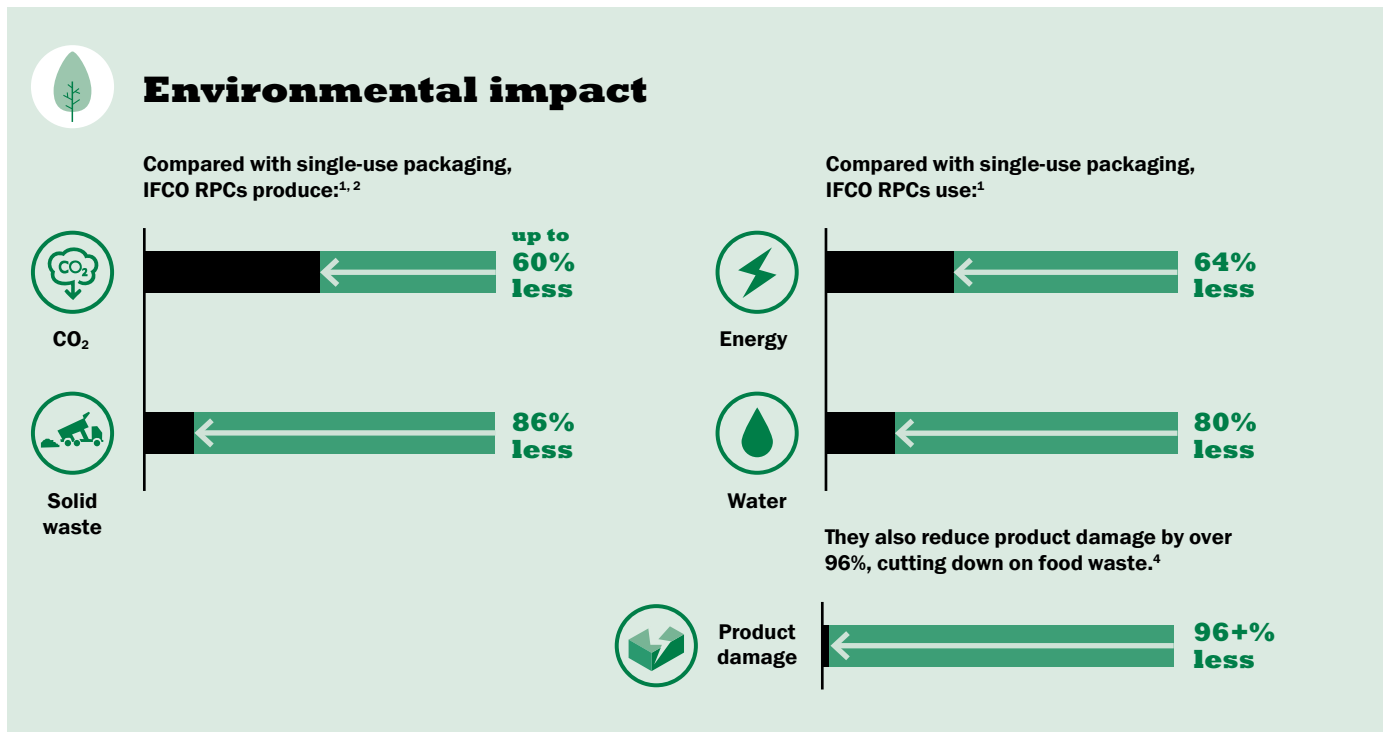
Water-recycling technology at many of our state-of-the-art wash centers reduces water use by over a third for each wash. By comparison, single-use packaging systems use 80% more water during

their lifecycle due to heavy water use during production (regardless of their recycled content), and in the recycling and disposal phases.<sup>1</sup>

1. Comparative life-cycle assessment of reusable plastic containers, Franklin Associates, 2017  
 2. Fraunhofer IBP study, Carbon Footprint of Food packaging, commissioned by Stiftung Initiative Mehrweg (SIM) Feb 2018  
 3. "Improving today to protect tomorrow", Kroger Company sustainability report, 2016  
 4. Determination of spoilage levels of fresh fruit and vegetables according to the type of packaging, study by University of Bonn, Institute for Animal Science, Cold-Chain Management Working Group and the Fraunhofer Institute for Material Flow and Logistics, May 2013

**Cutting waste through collaboration**

IFCO RPCs are an important part of leading grocery retailers' sustainability programs. For example, US retailer Kroger has calculated that its total use of RPCs in 2015 eliminated the use of more than 73,500 tons of waxed and corrugated boxes.<sup>3</sup>



IFCO SYSTEMS US, LLC  
 3030 North Rocky Point Drive | Suite 300 | Tampa, FL 33607 | USA  
 T: +1 813 463 4100 | F: +1 813 286 2070  
 www.ifco.com

IFCO partners with growers and retailers to deliver fresher, healthier food to the world. For more information, visit IFCO.com. A better supply chain serves us all. Let's eat.